

## Help Protect Our Drainage

You can help reduce drainage problems by keeping streams, ditches and gutters free from debris, including trash, leaves and yard clippings that can clog drainage and cause water to back-up.

Dumping in drains is a violation of state law.

Report violations to:  
Rocky Mount Public Works  
[972-1296]

## FLOOD SAFETY

You can learn more about the flood risk of your property by viewing flood maps at Braswell Memorial Public Library or the Department of Planning & Development at City Hall. Flooding in 1999 showed that the low-lying areas along the Tar River and its tributaries are prone to flooding. Water depths of more than six feet covered large areas of the city, affecting over 1,500 homes and other buildings. The City has many undeveloped floodplain areas and more areas will be converted to open space after the floodplain buyout project is completed. However, many residential and commercial areas remain flood-prone.

**Remember** - Hurricane Floyd was a major flood event, but smaller floods have also damaged homes and businesses. Not all floods are caused by hurricanes. Even if our area doesn't get much rain, intense storms over areas of the Tar River Watershed upstream of Rocky Mount may cause flooding. Upstream areas include Oxford, Louisburg, and Spring Hope.

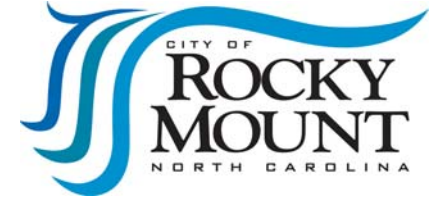
## FLOOD WARNING SYSTEM

The City of Rocky Mount has established an Emergency Area Radio Network with local stations. The stations are able to produce a signal in the event of an electrical power failure. Tune your battery-operated radio to one of these stations for emergency announcements:

WRSV 92.1 FM	WZAX 99.3 FM
WPWZ 95.5 FM	WRMT 1490 AM
WDWG 98.5 FM	WEED 1390 AM



CITY OF ROCKY MOUNT - PLANNING & DEVELOPMENT  
POST OFFICE BOX 1180  
ROCKY MOUNT, NC 27802



# Floodplain Information

## a citizen's guide

## FLOODPLAINS

*A floodplain is an area of land that is likely to flood after long and heavy rains, due to the land's proximity to lakes, rivers, or other bodies of water.*

### WHY PROTECT OUR FLOODPLAINS?

Floodplains fill up when rainfall and storm drainage collects and causes overflow of floodwaters. The City regulates floodplains to maximize public safety, to ensure buildings are built in ways that reduce severity of damage, and to minimize negative environmental impacts on wetlands and buffer areas.

Rivers and creeks naturally want to flood after heavy rain. That's why it makes sense to keep development away from waterways, so that the floodplain can function as nature intended.

This brochure provides basic information about floodplains; to learn more, please contact:

**CITY OF ROCKY MOUNT - PLANNING &  
DEVELOPMENT**

**331 SOUTH FRANKLIN STREET  
POST OFFICE BOX 1180  
ROCKY MOUNT, NC 27802  
[252] 972-1172  
PLANNING.ROCKYMOUNTNC.GOV**

## FLOOD INSURANCE

If your home or business is in the floodplain or in an area where stormwater collects, we urge you to buy flood insurance. Flood damage is not covered by your standard property insurance policy or your renter's policy. Some mortgages require you to buy flood insurance, but you can buy a policy even if your lender doesn't require it. Most insurance agents can sell you a flood policy. This important financial protection can pay for cleanup costs and to repair damage to your building. Be sure to ask for coverage to help replace personal belongings or building contents.

*The City of Rocky Mount participates in the National Flood Insurance Program's Community Rating System to ensure our residents pay less for flood insurance.*

## RETROFITTING: PROTECTING YOUR PROPERTY

What is "retrofitting"?

*"making changes to an existing building to protect it from flooding or other hazards such as high winds & earthquakes"*

### SIX METHODS TO RETROFITTING

1] Elevation

*-raising your house so that the lowest floor is above the flood level*

2] Wet Floodproofing

*-making uninhabited portions of your house resistant to flood damage and allowing water to enter during flooding*

3] Relocation

*-moving a house out of the floodplain to higher ground where it will not be exposed to flooding*

4] Dry Floodproofing

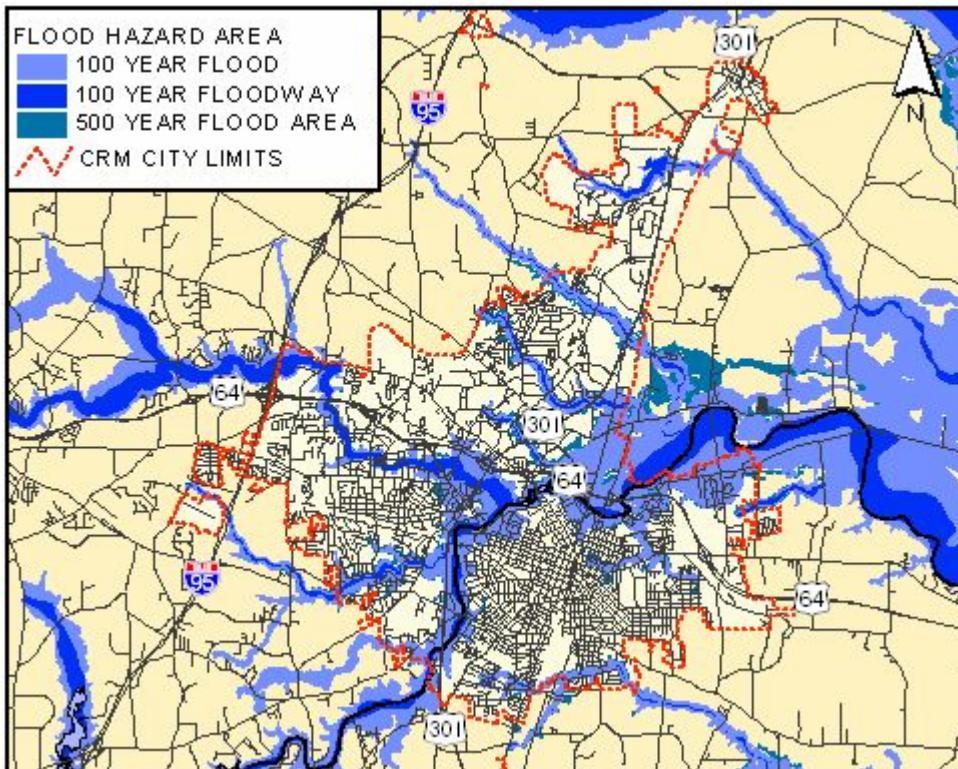
*-sealing a house to prevent flood waters from entering*

5] Levees and Floodwalls

*-building a floodwall or levee around your house to hold back flood water*

6] Demolition

*-tearing down a damaged house*



## IMPACT ON DEVELOPMENT

### FLOODPLAIN PERMITS

A permit is required to do any of the following in a floodplain: build, rebuild, grade or move dirt, bring in fill dirt, excavate or remove dirt, add onto your home or business, install an underground or above ground tank, subdivide land, or place accessory buildings and temporary structures.

New buildings, including manufactured homes, must be elevated above the predicted flood level. Substantial improvements or repairs [including new additions] must be elevated.

Contact Planning & Development to find out if you need a building permit and a floodplain development permit. Application materials are available on the City's website at [www.rockymountnc.gov](http://www.rockymountnc.gov)

Legal action may be taken against those who do not get a permit before building or disturbing land in a flood-prone area.

### FLOODPLAINS MAKE GOOD OPEN SPACE

In Rocky Mount, parts of Battle Park, Tom Stith Park, and Sunset Park are in the floodplain. These areas are preserved as open space.

If you plan to build in a floodplain, you should consider locating back from the river or stream to leave the floodplain open. Most wetlands are found in floodplains. Wetlands have many types of plants and wildlife and are valuable for water quality and habitat protection. A permit from the U.S. Army Corps of Engineers is required to alter a wetland.